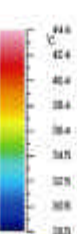
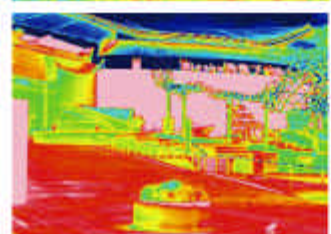
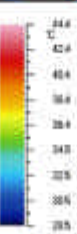
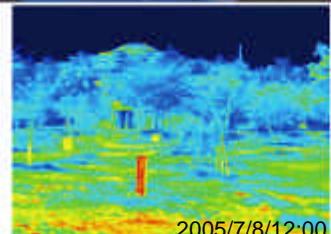


# OSAKA Central Gym

1996

Nikken Sekkei

Osaka city, Osaka



The Osaka central gymnasium has Kendo ashram, training room, Judo ashram, and a sub arena other than the huge main arena which has 10,000 seating capacity. The building half built in the underground has its roof all covered by plants, vines and trees which creates the green landscape merging with the park. You can walk around in the roof garden of the gymnasium and it is used as a place of relaxation and amusement by the local residences. The picture shows the temperature difference of the gymnasium surrounding areas covered by green and the concrete area next to the gymnasium. It is clearly shown in the picture that in the surrounding area of the gymnasium, the plants blocks the sunlight and creates a cool spot and at the same time creates a cool island as a extensive green park.

# Nakajima Garden Housing Project

Yasumitsu matunaga

1999

huzi-city shizuoka-prefecture

This housing project is a prototype which realize the good condition in the urban life. Several alleys partition off the 12 houses into 6 blocks and each unit is just 2 storied house. Pedestrian mall, water way, ponds, spaces of alley becomes the habit for many kinds of livings, and protects the diversity of organisms. The design of the roof garden, the flow of the wind, and the eaves and the openings were considered on the movement of the sun through out the year.

